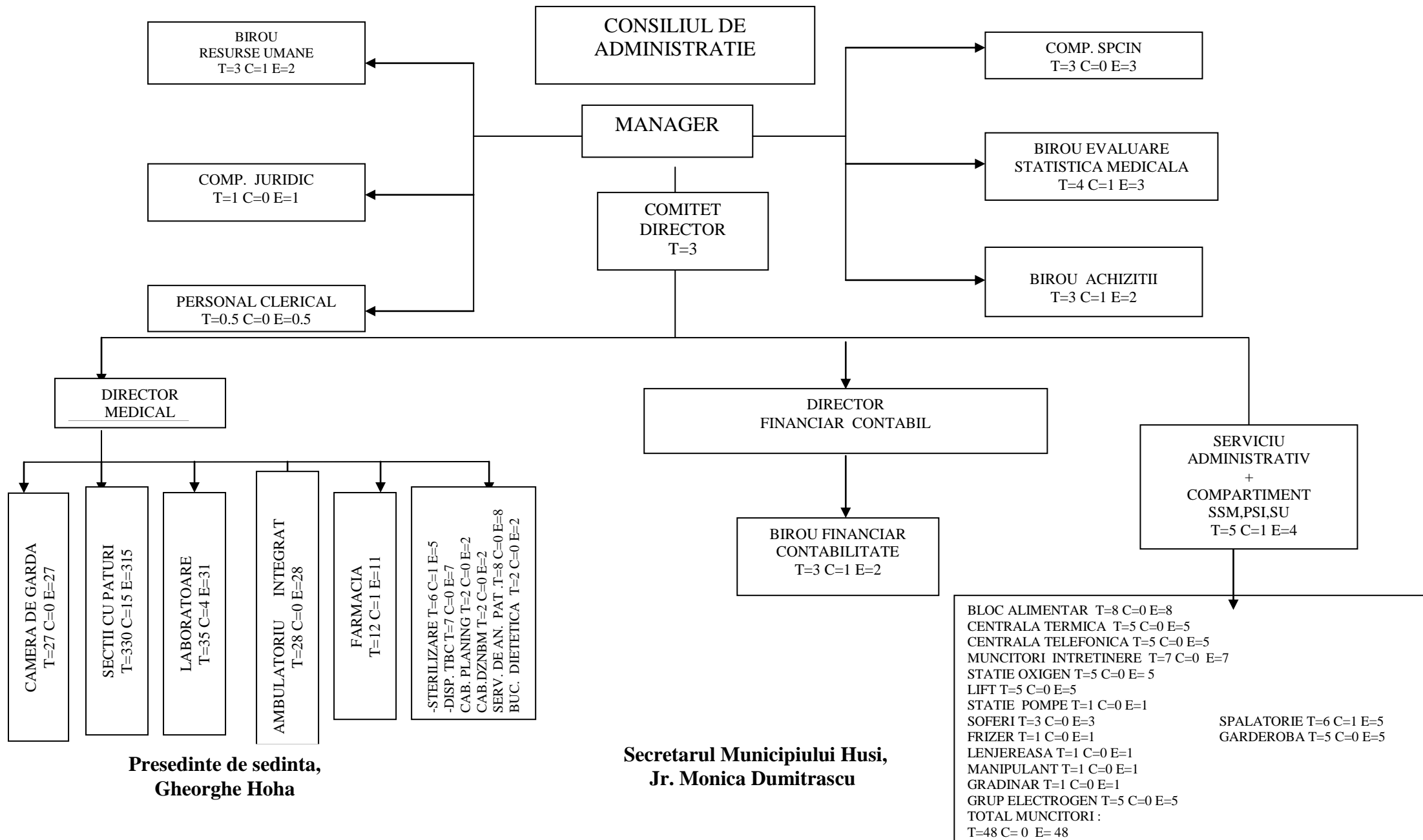


ORGANIGRAMA SPITALULUI MUNICIPAL „DIMITRIE CASTROIAN” HUSI



STAT DE FUNCTII
pentru Spitalul Municipal "Dimitrie Castroian "Husi

Nr. crt.	COMPARTIMENT/FUNCTIE	Nivel de studii	Nr. Posturi
I.COMITET DIRECTOR			3
1	MANAGER, GR. II	S	1
2	DIRECTOR MEDICAL GR. II	S	1
3	DIRECTOR FINANCIAR CONTABIL, GR. II	S	1
II.SECTIA MEDICINA INTERNA-40 paturi			29
4	MEDIC SEF SECTIE , GR.I	S	1
5	MEDIC PRIMAR	S	1
6	MEDIC SPECIALIST	S	1
7...8	MEDIC REZIDENT AN III	S	2
9	MEDIC REZIDENT AN III	S	1
10	ASISTENT MEDICAL PRINCIPAL SEF	PL	1
11...16	ASISTENT MEDICAL PRINCIPAL	PL	6
17	SORA MEDICALA PRINCIPALA	M	1
18...21	ASISTENT MEDICAL	PL	4
22	ASISTENT MEDICAL DEBUTANT	PL	1
23...29	INFIRMIERA	M	7
30...32	INGRIJITOARE	G	3
III. COMPARTIMENT CARDIOLOGIE-20 paturi			18
33	MEDIC SPECIALIST	S	1
34	MEDIC REZIDENT AN IV	S	1
35...39	ASISTENT MEDICAL PRINCIPAL	PL	5
40	ASISTENT MEDICAL	PL	1
41	ASISTENT MEDICAL	S	1
42	ASISTENT MEDICAL DEBUTANT	PL	1
43...47	INFIRMIERA	M	5
48...50	INGRIJITOARE	G	3
IV.SECTIA MEDICINA INTERNA CRONICI-30 paturi			23
51	MEDIC SEF SECTIE ,GR.I	S	1
52	MEDIC PRIMAR	S	1
53	KINETOTERAPEUT	S	1
54	ASISTENT MEDICAL PRINCIPAL SEF	PL	1
55...58	ASISTENT MEDICAL PRINCIPAL	PL	4
59...60	ASISTENT MEDICAL	PL	2
61	ASISTENT MEDICAL DEBUTANT	PL	1
62...70	INFIRMIERA	M	9
71...73	INGRIJITOARE	G	3
V. COMPARTIMENT PEDIATRIE-20 paturi			26
74...76	MEDIC SPECIALIST	S	3
77	MEDIC REZIDENT ANUL II	S	1
78	PSIHOLOG	S	1
79	ASISTENT SOCIAL	PL	1
80...86	ASISTENT MEDICAL PRINCIPAL	PL	7
87...90	ASISTENT MEDICAL	PL	4
91	ASISTENT MEDICAL DEBUTANT	PL	1
92...96	INFIRMIERA	M	5
97...99	INGRIJITOARE	G	3

VI. SECTIA OBSTETRICA GINECOLOGIE-35 paturi			49
100	MEDIC SEF SECTIE, GR. I	S	1
101...103	MEDIC PRIMAR	S	3
104	MEDIC SPECIALIST	S	1
105	ASISTENT MEDICAL PRINCIPAL SEF	PL	1
106...112	ASISTENT MEDICAL PRINCIPAL	PL	7
113...115	ASISTENT MEDICAL	PL	3
116	ASISTENT MEDICAL DEBUTANT	PL	1
117...124	INFIRMIERA	M	8
125...131	INGRIJITOARE	G	7
SALA DE NASTERI-POST FIX			
132	MEDIC SPECIALIST	S	1
133...136	ASISTENT MEDICAL PRINCIPAL	PL	4
137	ASISTENT MEDICAL	PL	1
SALA DE OPERATII-POST FIX			
138...141	ASISTENT MEDICAL PRINCIPAL	PL	4
142	ASISTENT MEDICAL	PL	1
143...145	INFIRMIERA	M	3
146...148	INGRIJITOARE	G	3
VII.COMPARTIMENT NEONATOLOGIE-15 paturi			26
149	MEDIC PRIMAR	S	1
150	MEDIC SPECIALIST	S	1
151	MEDIC REZIDENT AN II	S	1
152...156	ASISTENT MEDICAL PRINCIPAL	PL	5
157...166	ASISTENT MEDICAL	PL	10
167...168	ASISTENT MEDICAL DEBUTANT	PL	2
169...173	INFIRMIERA	M	5
174	INGRIJITOARE	G	1
VIII.SECTIA CHIRURGIE GENERALA-35 paturi			33
175	MEDIC SEF SECTIE GR. I	S	1
176	MEDIC PRIMAR	S	1
177	MEDIC SPECIALIST	S	1
178	MEDIC REZIDENT ANUL III	S	1
179	MEDIC REZIDENT AN IV	S	1
180	MEDIC REZIDENT AN III	S	1
181	ASISTENT MEDICAL PRINCIPAL SEF	PL	1
182...187	ASISTENT MEDICAL PRINCIPAL	PL	6
188...192	ASISTENT MEDICAL	PL	5
193	ASISTENT MEDICAL DEBUTANT	PL	1
194...201	INFIRMIERA	M	8
202...207	INGRIJITOARE	G	6
IX.COMPARTIMENT OFTALMOLOGIE-5 paturi			5
208	MEDIC PRIMAR	S	1
209	MEDIC REZIDENT AN II	S	1
210...211	ASISTENT MEDICAL	PL	2
212	INFIRMIERA	M	1
X. SECTIA BOLI INFECTIOASE-25 paturi			20
213	MEDIC SEF SECTIE GR.I	S	1
214	MEDIC SPECIALIST	S	1
215	ASISTENT MEDICAL PRINCIPAL SEF	PL	1
216...222	ASISTENT MEDICAL PRINCIPAL	PL	7
223	ASISTENT MEDICAL	PL	1
224	ASISTENT MEDICAL DEBUTANT	PL	1
225...229	INFIRMIERA	M	5
230...232	INGRIJITOARE	G	3
XI. SECTIA NEUROLOGIE-25 paturi			29

233	MEDIC SEF SECTIE GR.I	S	1
234	MEDIC SPECIALIST	S	1
235	MEDIC REZIDENT AN II	S	1
236	ASISTENT MEDICAL PRINCIPAL SEF	PL	1
237...242	ASISTENT MEDICAL PRINCIPAL	PL	6
243...246	ASISTENT MEDICAL	PL	4
247	ASISTENT MEDICAL DEBUTANT	PL	1
248...258	INFIRMIERA	M	11
259...261	INGRIJITOARE	G	3
XII.SECTIA A.T.I.-15 paturi			37
262	MEDIC SEF SECTIE GR. I	S	1
263	MEDIC REZIDENT ANUL I	S	1
264	MEDIC SPECIALIST	S	1
265	MEDIC REZIDENT AN II	S	1
266	ASISTENT MEDICAL PRINCIPAL SEF	PL	1
267...276	ASISTENT MEDICAL PRINCIPAL	PL	10
277...280	ASISTENT MEDICAL	PL	4
281...282	ASISTENT MEDICAL DEBUTANT	PL	2
283...294	INFIRMIERA	M	12
295...297	INGRIJITOARE	G	3
UNITATE DE TRANSFUZII DE SANGE-POST FIX			
298	ASISTENT MEDICAL	PL	1
XIII.COMPARTIMENT PSIHIATRIE-15 paturi			16
299	MEDIC PRIMAR	S	1
300	MEDIC REZIDENT AN II	S	1
301...304	ASISTENT MEDICAL PRINCIPAL	PL	4
305	ASISTENT MEDICAL	PL	1
306	ASISTENT MEDICAL	PL	1
307...311	INFIRMIERA	M	5
312...313	INGRIJITOARE	G	2
314	BRANCARDIER	G	1
XIV. COMPARTIMENT DERMATOVENEROLOGIE-5 paturi			5
315...316	MEDIC SPECIALIST	S	2
317...318	ASISTENT MEDICAL	PL	2
319	INFIRMIERA	M	1
XV. CAMERA DE GARDA POST FIX			27
320	MEDIC REZIDENT AN III	S	1
321	MEDIC	S	1
322...324	ASISTENT MEDICAL PRINCIPAL	PL	3
325...329	ASISTENT MEDICAL	PL	5
330	ASISTENT MEDICAL DEBUTANT	PL	1
331	REGISTRATOR MEDICAL PRINCIPAL	M	1
332...338	REGISTRATOR MEDICAL	M	7
339...341	INGRIJITOARE	G	3
342...346	BRANCARDIER	G	5
XVI. STERILIZARE			6
347	ASISTENT MEDICAL PRINCIPAL SEF	PL	1
348...349	ASISTENT MEDICAL PRINCIPAL	PL	2
350...351	ASISTENT MEDICAL	PL	2
352	INGRIJITOARE	G	1
XVII. BLOC OPERATOR			13
353	MEDIC SPECIALIST	S	1
354	ASISTENT MEDICAL PRINCIPAL SEF	PL	1
355...358	ASISTENT MEDICAL PRINCIPAL	PL	4
359...361	INFIRMIERA	M	3
362...363	INGRIJITOARE	G	2

364...365	BRANCARDIER	G	2
XVIII.FARMACIA CU CIRCUIT INCHIS			12
366	FARMACIST SEF GR. II	S	1
367	FARMACIST REZIDENT AN II	S	1
368...371	ASISTENT MEDICAL PRINCIPAL	PL	4
372	ASISTENT MEDICAL	PL	1
373	ASISTENT MEDICAL	PL	1
374	ECONOMIST GR.II	S	1
375	OPERATOR CONTROLOR DATE II	M	1
376...377	INGRIJITOARE	G	2
XIX.LABORATOR ANALIZE MEDICALE CU PUNCT DE LUCRU IN AMBULATORIUL INTEGRAT			20
378...379	MEDIC REZIDENT AN I	S	2
380	SEF LABORATOR GR.II	S	1
381	BIOLOG PRINCIPAL	S	1
382	CHIMIST SPECIALIST	S	1
383	BIOLOG PRINCIPAL	S	1
384	ASISTENT MEDICAL PRINCIPAL SEF	PL	1
385...389	ASISTENT MEDICAL PRINCIPAL	PL	5
390...393	ASISTENT MEDICAL	PL	4
394	ASISTENT MEDICAL DEBUTANT	PL	1
395	REGISTRATOR MEDICAL	M	1
396...397	INGRIJITOR	G	2
XX. LABORATOR RADIOLOGIE SI IMAGISTICA MEDICALA CU PUNCT DE LUCRU IN AMBULATORIU INTEGRAT			13
398	MEDIC SEF LABORATOR GR.I	S	1
399	MEDIC REZIDENT AN III	S	1
400	MEDIC SPECIALIST	S	1
401	ASISTENT MEDICAL PRINCIPAL SEF	PL	1
402...405	ASISTENT MEDICAL	PL	4
406	ASISTENT MEDICAL DEBUTANT	PL	1
407	SORA MEDICALA PRINCIPALA	M	1
408...410	INGRIJITOR	G	3
XXI. SERVICIU ANATOMIE PATOLOGICA CU COMPARTIMENT CITOLOGIE, HISTOPATOLOGIE ,PROSECTURA			8
411...412	MEDIC PRIMAR	S	2
413	BIOCHIMIST	S	1
414...415	SORA MEDICALA PRINCIPALA	M	2
416	ASISTENT MEDICAL PRINCIPAL	PL	1
417	AUTOPSIER	G	1
418	INGRIJITOR	G	1
XXII. LABORATOR EXPLORARI FUNCTIONALE			1
419	ASISTENT MEDICAL	PL	1
XXIII. COMPARTIMENT DE PREVENIRE SI CONTROL AL INFECTIILOR NOSOCOMIALE			3
420	MEDIC REZIDENT AN I	S	1
421	ASISTENT MEDICAL PRINCIPAL	PL	1
422	INFIRMIER/AGENT DDD	G	1
XXIV. BIROU DE EVALUARE SI STATISTICA MEDICALA			4
423	BIOINGINER MEDICAL SEF GR.II	S	1
424	BIOINGINER MEDICAL SPECIALIST	S	1
425	ASISTENT MEDICAL PRINCIPAL	PL	1
426	ASISTENT MEDICAL	PL	1
XXV.CABINET DIABET ZAHARAT,NUTRITIE SI BOLI METABOLICE			2
427	MEDIC REZIDENT AN III	S	1
428	ASISTENT MEDICAL PRINCIPAL	PL	1

XXVI. SPALATORIE			6
429	SPALATOREASA CU GESTIUNE	M	1
430...432	SPALATOREASA	M	3
433...434	SPALATOREASA	G	2
XXVII.GARDEROBA			5
435...439	GARDEROBIER	G	5
XXVIII.BUCATARIE DIETETICA			2
440...441	ASISTENT MEDICAL PRINCIPAL	PL	2
XXIX. MUNCITORI			48
MUNCITORI INTRETINERE CLADIRI,INSTALATII DE APA LUMINA SI INCALZIRE			7
TAMPLAR			
442	MUNCITOR CALIFICAT TR. IV	G	1
ELECTRICIAN DE INTRETINERE SI REPARATII			
443...444	MUNCITOR CALIFICAT TR.III	G	2
ZIDAR			
445	MUNCITOR CALIFICAT TR. IV	G	1
SUDOR			
446	MUNCITOR CALIFICAT TR. III	G	1
INSTALATII DE APA SI CANAL			2
447	MUNCITOR CALIFICAT TR.III	G	1
448	MUNCITOR CALIFICAT TR.IV		1
MUNCITOR BLOC ALIMENTAR			8
BUCATAR			
449...450	MUNCITOR CALIFICAT TR. IV	M	2
MUNCITOR NECALIFICAT TR.I			
451...456	MUNCITOR NECALIFICAT TR.I	G	6
MUNCITORI CARE DESERVESC CENTRALA TERMICA			5
457	MUNCITOR CALIFICAT TR. I	G	1
458...459	MUNCITOR CALIFICAT TR. II	G	2
460...461	MUNCITOR CALIFICAT TR. IV	G	2
MUNCITORI CARE DESERVESC STATIA CENTRALA DE OXIGEN			5
462...466	MUNCITOR CALIFICAT TR. IV	G	5
MUNCITORI CARE DESERVESC LIFTUL CU INSOTITOR			5
467	MUNCITOR CALIFICAT TR. II	G	1
468...471	MUNCITOR CALIFICAT TR. IV	G	4
MUNCITORI CARE DESERVESC CENTRALA TELEFONICA			5
472...476	MUNCITOR CALIFICAT TR. III	M	5
ACTIVITATEA DE CONDUCERE AUTO			3
477...479	SOFER TR. II	G	3
FRIZER			1
480	MUNCITOR CALIFICAT TR. IV	G	1
INTRETINERE INVENTAR MOALE			1
481	MUNCITOR CALIFICAT TR. IV	G	1
INTRETINERE SPATII VERZI			1
482	MUNCITOR NECALIFICAT TR.I	G	1
APROVIZIONARE,MANIPULARE ,DEPOZITARE SI DESERVIRE MIJLOACE DE TRANSPORT			1
483	MUNCITOR NECALIFICAT TR.I	G	1
DESERVIRE GRUP ELECTROGEN			5
ELECTRICIAN			
484...488	MUNCITOR CALIFICAT TR. IV	G	5
MUNCITORI CARE DESERVESC STATIA DE POMPE			1
489	MUNCITOR CALIFICAT TR. IV	G	1
XXX. PERSONAL CLERICAL			0.5
490	PREOT GR.II	S	0.5

XXXI. PERSONAL T.E.S.A.			15
BIROU RESURSE UMANE			3
491	SEF BIROU GR.II	S	1
492	REFERENT DE SPECIALITATE GRAD II	S	1
493	REFERENT IA	M	1
BIROU FINANCIAR CONTABIL			3
494	SEF BIROU GR.II	S	1
495...496	ECONOMIST GR.II	S	2
BIROU APROVIZIONARE			3
497	SEF BIROU GR. II	S	1
498...499	MAGAZINER TR. I	M	2
SERVICIU TEHNIC -ADMINISTRATIV			5
500	SEF SERVICIU GR. II	S	1
501	ECONOMIST IA	S	1
502	ECONOMIST II	S	1
503	INGINER IA	S	1
COMPARTIMENT SANATATE SI SECURITATE A MUNCII			
504	INGINER IA	S	1
COMPARTIMENT JURIDIC			
505	CONSILIER JURIDIC DEBUTANT	S	1
XXXII.AMBULATORIUL INTEGRAT CU CABINETE IN SPECIALITATE			29
CABINET MEDICINA INTERNA			
506	ASISTENT MEDICAL PRINCIPAL	PL	1
507	ASISTENT MEDICAL	PL	1
CABINET O.R.L.			
508	MEDIC REZIDENT AN III	S	1
509	ASISTENT MEDICAL	PL	1
CABINET OFTALMOLOGIE			
510	ASISTENT MEDICAL PRINCIPAL	PL	1
511	ASISTENT MEDICAL	PL	1
CABINET CHIRURGIE GENERALA			
512	ASISTENT MEDICAL PRINCIPAL	PL	1
513	ASISTENT MEDICAL	PL	1
CABINET OBSTETRICA GINECOLOGIE			
514	ASISTENT MEDICAL PRINCIPAL	PL	1
515	ASISTENT MEDICAL	PL	1
CABINET PEDIATRIE			
516	ASISTENT MEDICAL PRINCIPAL	PL	1
517	ASISTENT MEDICAL	PL	1
CABINET NEUROLOGIE			
518	ASISTENT MEDICAL	PL	1
CABINET DERMATOVENEROLOGIE			
519	ASISTENT MEDICAL	PL	1
520	ASISTENT MEDICAL PRINCIPAL	PL	1
CABINET ENDOCRINOLOGIE			
521	MEDIC REZIDENT AN III	S	1
522	ASISTENT MEDICAL	PL	1
CABINET PSIHIATRIE			
523	ASISTENT MEDICAL PRINCIPAL	PL	1
524	ASISTENT MEDICAL	PL	1
CABINET RECUPERARE , MEDICINA FIZICA SI BALNEOLOGIE			
525...526	MEDIC REZIDENT AN II	S	2
527...528	ASISTENT MEDICAL PRINCIPAL	PL	2
SALA DE TRATAMENT			
529	ASISTENT MEDICAL	PL	1
COMPARTIMENT STATISTICA MEDICALA			

530	REGISTRATOR MEDICAL PRINCIPAL	PL	1
	PERSONAL DE CURATENIE		
531...534	INGRIJITOR	G	4
XXXIII. DISPENSAR T.B.C.			7
535...536	MEDIC PRIMAR	S	2
537...539	ASISTENT MEDICAL PRINCIPAL	PL	3
540	SORA MEDICALA PRINCIPALA	M	1
541	INGRIJITOR	G	1
XXXIV. CABINET PLANIFICARE FAMILIALA			2
542	MEDIC PRIMAR	S	1
543	ASISTENT MEDICAL	PL	1

Presedinte de sedinta,
Gheorghe Hoha

Secretarul Municipiului Husi,
jr. Monica Dumitrascu