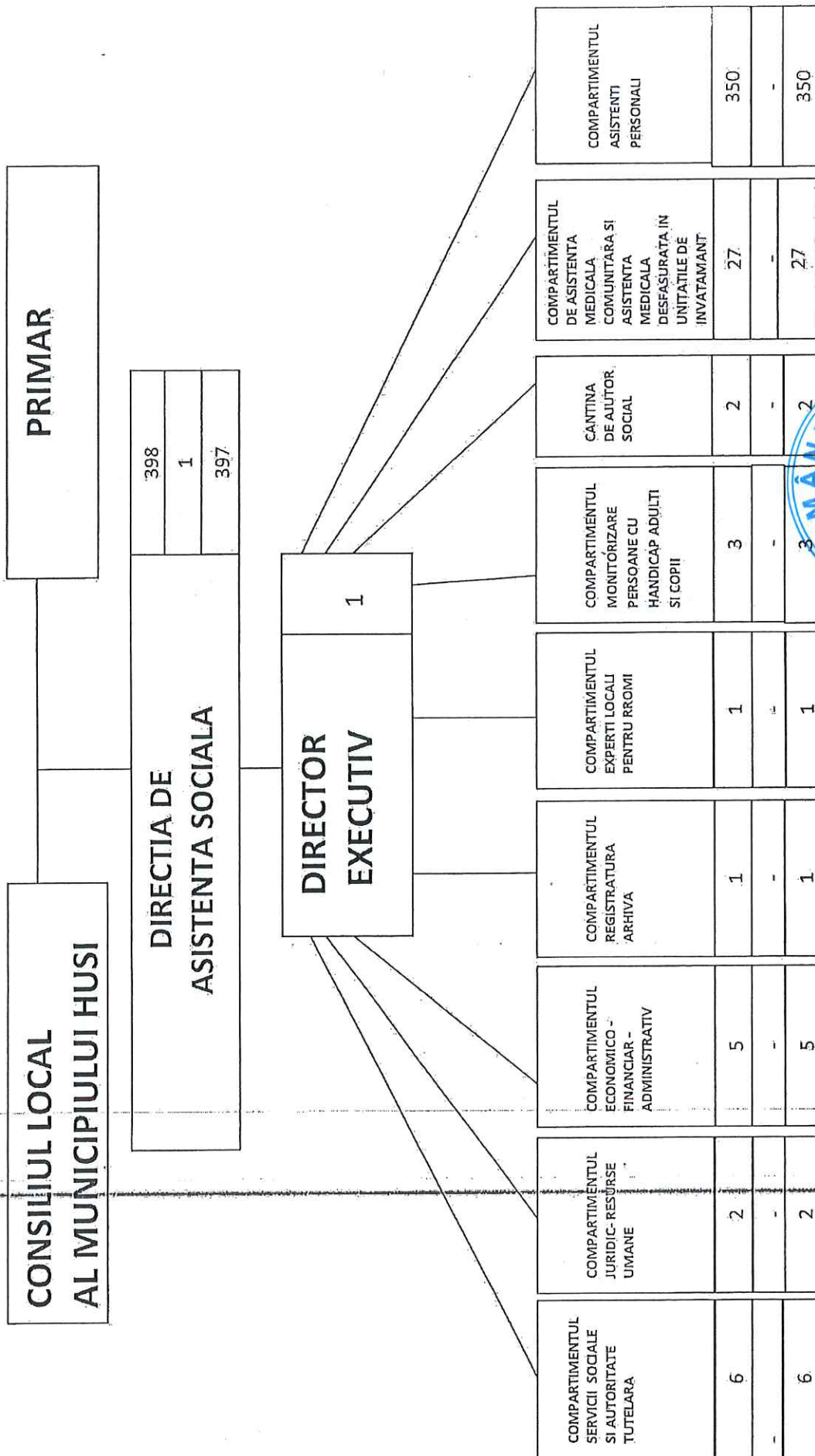


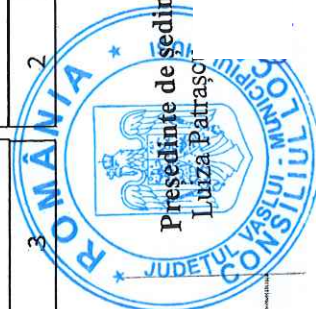
ORGANIGRAMA DIRECTIEI DE ASISTENTA SOCIALA



DIRECTOR EXECUTIV
ING. CALINESCU FEDORA

Președinte de ședință,
Luiza Patrascu

Secretar general,
jr.Monica Dumitrașcu



STAT DE FUNCTII
pentru Directia de Asistenta Sociala Husi

| Nr. crt. | Denumirea compartimentului a functiei de conducere/de executie | Nivelul studiilor | Funcții publice | | | Funcții contractuale | | |
|------------|--|-------------------|-----------------|------------------|------------------|----------------------|--------|--------|
| | | | Clasa | Grad profesional | Grad profesional | Treapta profesionala | IdPost | |
| | CONDUCEREA DAS Husi | | | | | | | |
| 1. | Director executiv gradul II | S | - | - | - | - | - | 395341 |
| I | COMPARTIMENTUL SERVICII SOCIALE SI AUTORITATE TUTELARA | | | | | | | |
| 2 | Consilier | S | I | superior | | | | 395342 |
| 3 | Inspector | S | I | superior | | | | 395346 |
| 4 | Inspector | S | I | superior | | | | 395347 |
| 5 | Inspector | S | I | superior | | | | 395350 |
| 6 | Inspector de specialitate (asistent social) | S | - | - | | | II | - |
| 7 | Inspector (asistent social) | S | I | principal | | | | |
| II | COMPARTIMENT JURIDIC-RESURSE UMANE | | | | | | | |
| 8 | Inspector | S | I | superior | | | | 395343 |
| 9. | Consilier juridic | S | I | superior | | | - | 395348 |
| III | COMPARTIMENT ECONOMICO-FINANCIAR-ADMINISTRATIV | | | | | | | |
| 10 | Inspector | | | superior | | | - | 395349 |
| 11 | Inspector | | | superior | | | - | 444830 |
| 12 | Inspector | | | superior | | | - | 395345 |
| 13 | Administrator | M | | - | | | - | I |
| 14 | Inspector | S | I | debutant | | | | |

| | | | | | | | | | | | |
|------|---|----|---|------------------|-----------|--|--|--|-----|--|--------|
| IV | COMPARTIMENT REGISTRATURA ARHIVA | | | | | | | | | | |
| 15 | Referent | M | - | - | - | | | | IA | | - |
| V | COMPARTIMENT EXPERTI LOCALI PENTRU ROMI | | | | | | | | | | |
| 16 | <i>Inspector</i> | S | I | <i>principal</i> | | | | | | | 550432 |
| VI | COMPARTIMENT MONITORIZARE PERSOANE CU HANDICAP ADULTI SI COPII | | | | | | | | | | |
| 17 | Inspector de specialitate | S | - | - | - | | | | IA | | - |
| 18 | <i>Inspector</i> | S | - | <i>principal</i> | | | | | | | - |
| 19 | Inspector | S | - | principal | | | | | | | - |
| VII | CANTINA DE AJUTOR SOCIAL | | | | | | | | | | |
| 20 | Muncitor calificat (bucatar) | M | - | - | - | | | | III | | - |
| 21 | Muncitor necalificat | M | - | - | - | | | | I | | - |
| VIII | COMPARTIMENTUL ASISTENTA MEDICALA COMUNITARA SI ASISTENTA MEDICALA DESFASURATA in UNITATILE DE INVATAMANT | | | | | | | | | | |
| 22 | Medic Specialist | S | - | - | - | | | | | | - |
| 23 | Medic | S | - | - | - | | | | | | - |
| 24 | Asistent medical – Cabinet medical scolar | S | - | - | principal | | | | | | - |
| 25 | Asistent medical – Cabinet medical scolar | PL | - | principal | | | | | | | - |
| 26 | Asistent medical – Cabinet medical scolar | PL | - | principal | | | | | | | - |
| 27 | Asistent medical – Cabinet medical scolar | PL | - | principal | | | | | | | - |
| 28 | Asistent medical – Cabinet medical scolar | PL | - | principal | | | | | | | - |
| 29 | Asistent medical – Cabinet medical scolar | PL | - | principal | | | | | | | - |
| 30 | Asistent medical – Cabinet medical scolar | PL | - | principal | | | | | | | - |
| 31 | Asistent medical – Cabinet medical scolar | PL | - | - | - | | | | | | - |

| | | | | | | |
|--|---|-----------|----|-----------------|---|---|
| 32 | Asistent medical – Cabinet medical scolar | PL | - | - | - | - |
| 33 | Asistent medical – Gradinita | PL | - | principal | - | - |
| 34 | Asistent medical – Gradinita | PL | - | principal | - | - |
| 35 | Asistent medical – Gradinita | PL | - | principal | - | - |
| 36 | Asistent medical – Gradinita | PL | - | principal | - | - |
| 37 | Asistent medical – Gradinita | PL | - | principal | - | - |
| 38 | Asistent medical – Gradinita | PL | - | principal | - | - |
| 39 | Medic (stomatolog) | S | - | - | - | - |
| 40 | Asistent medical (stomatologie) – Cabinete medicale dentare | PL | - | - | - | - |
| 41 | <i>Asistent medical comunitar</i> | <i>PL</i> | - | <i>debutant</i> | - | - |
| 42 | Asistent medical comunitar | PL | - | principal | - | - |
| 43 | Asistent medical comunitar | PL | - | - | - | - |
| 44 | Instructor de educatie | M | - | - | - | - |
| 45 | Asistent medical – Cabinet medical scolar | PL | - | principal | - | - |
| 46 | Asistent medical – Cabinet medical scolar | PL | - | - | - | - |
| 47 | Asistent medical – Cabinet medical scolar | PL | - | - | - | - |
| 48 | Asistent medical – Cabinet medical scolar | PL | - | - | - | - |
| IX COMPARTIMENT ASISTENTI PERSONALI | | | | | | |
| 49-398 | Asistenti personali | M | -- | - | - | - |

| Numar posturi /Funcția | Ocupate | Vacante | Total |
|---|---------|---------|-------|
| Nr. total de funcții publice de conducere | 1 | - | 1 |
| Nr. total de funcții publice de execuție | 13 | - | 13 |
| Nr. total de funcții contractuale | 274 | 110 | 384 |
| Nr. total de funcții din instituție | 288 | 110 | 398 |

Directia de Asistenta Sociala
 Director executiv
 Ing.Calinescu Teodora

Președinte de ședință,
 Luiza Patrașcu



Secretar general,
 jr.Monica Dumitrașcu