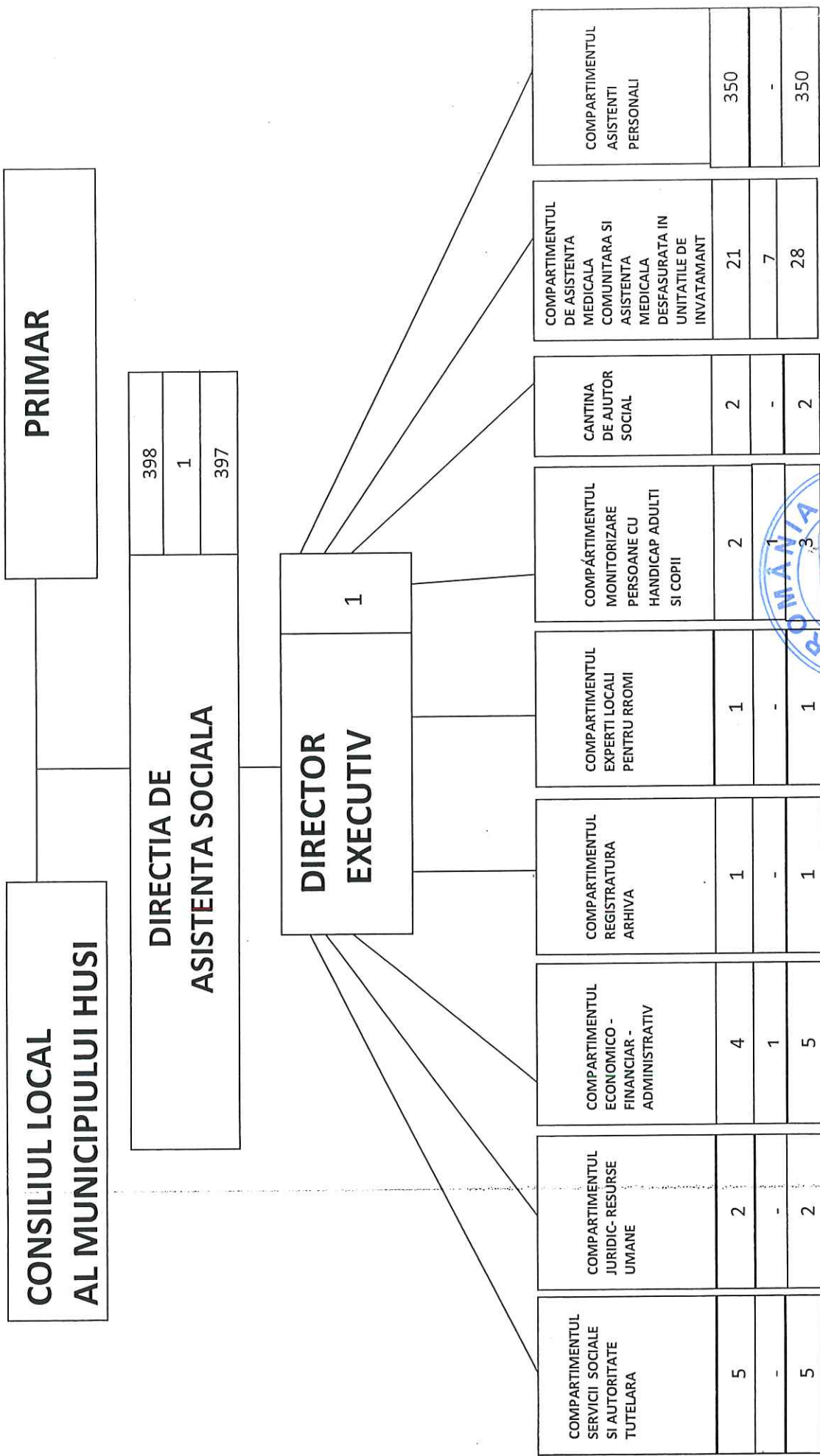


ORGANIGRAMA DIRECTIEI DE ASISTENTA SOCIALA



DIRECTOR EXECUTIV  
ING. CALINESCU TEODORA

PRESEDINTE DE SEDINTA,  
Alexandru Focia

SECRETAR GENERAL,  
jr, Monica Dumitraşcu



**STAT DE FUNCTII**  
**pentru Directia de Asistenta Sociala Husi**

Nr. crt.	Denumirea compartimentului a functiei de conducere/de executie	Nivelul studiilor	Funcții publice			Funcții contractuale		
			Clasa	Grad profesional	Grad profesional	Treapta profesionala	IdPost	
1.	Director executiv gradul II	S	-	-	-	-	395341	
<b>I</b>	<b>COMPARTIMENTUL SERVICII SOCIALE SI AUTORITATE TUTELARA</b>							
2	Consilier	S	I	superior			395342	
3	Inspector	S	I	superior			395346	
4	Inspector	S	I	superior			395347	
5	Inspector	S	I	superior			395350	
6	Inspector de specialitate (asistent social)	S	-	-		II	-	
<b>II</b>	<b>COMPARTIMENT JURIDIC-RESURSE UMANE</b>							
7	Inspector	S	I	superior			395343	
8.	Consilier juridic	S	I	superior		-	395348	
<b>III</b>	<b>COMPARTIMENT ECONOMICO-FINANCIAR-ADMINISTRATIV</b>							
9	Inspector			superior		-	395349	
10	Inspector			superior		-	444830	
11	Inspector			superior		-	395345	
12	Administrator			M		-	I	
13	Ingrijitor			G		-	-	

IV	<b>COMPARTIMENT REGISTRATURA ARHIVA</b>									
14	Referent	M	-	-	-	-	-	-	IA	-
V	<b>COMPARTIMENT EXPERTI LOCALI PENTRU ROMI</b>									
15	Inspector	S	I	asistent						550432
VI	<b>COMPARTIMENT MONITORIZARE PERSOANE CU HANDICAP ADULTI SI COPII</b>									
16	Inspector de specialitate	S	-	-	-	-	-	-	IA	-
17	Inspector de specialitate	S	-						II	-
18	Inspector	S	-	principal						-
VII	<b>CANTINA DE AJUTOR SOCIAL</b>									
19	Muncitor calificat (bucatar)	M	-	-	-	-	-	-	III	-
20	Muncitor necalificat	M	-	-	-	-	-	-	I	-
VIII	<b>COMPARTIMENTUL ASISTENTA MEDICALA COMUNITARA SI ASISTENTA MEDICALA DESFASURATA in UNITATILE DE INVATAMANT</b>									
21	Medic Specialist	S	-	-	-	-	-	-	-	-
22	Medic	S	-	-	-	-	-	-	-	-
23	Asistent medical – Cabinet medical scolar	S	-	-	-	-	-	-	-	-
24	Asistent medical – Cabinet medical scolar	PL	-	principal					-	-
25	Asistent medical – Cabinet medical scolar	PL	-	principal					-	-
26	Asistent medical – Cabinet medical scolar	PL	-	principal					-	-
27	Asistent medical – Cabinet medical scolar	PL	-	principal					-	-
28	Asistent medical – Cabinet medical scolar	PL	-	principal					-	-
29	Asistent medical – Cabinet medical scolar	PL	-	principal					-	-
30	<i>Asistent medical – Cabinet medical scolar</i>	PL	-	-	-	-	-	-	-	-

31	Asistent medical – Cabinet medical scolar	PL	-	-	-	-
32	Asistent medical – Gradinita	PL	-	-	principal	-
33	Asistent medical – Gradinita	PL	-	-	principal	-
34	Asistent medical – Gradinita	PL	-	-	principal	-
35	Asistent medical – Gradinita	PL	-	-	principal	-
36	Asistent medical – Gradinita	PL	-	-	principal	-
37	Asistent medical – Gradinita	PL	-	-	principal	-
38	Medic ( stomatolog)	S	-	-	-	-
39	Dentist	SSD	-	-	-	-
40	Asistent medical (stomatologie) – Cabinete medicale dentare	PL	-	-	-	-
41	Asistent medical comunitar	PL	-	-	principal	-
42	Asistent medical comunitar	PL	-	-	principal	-
43	Asistent medical comunitar	PL	-	-	-	-
44	Instructor de educatie	M	-	-	-	-
45	Asistent medical – Cabinet medical scolar	PL	-	-	principal	-
46	Asistent medical – Cabinet medical scolar	PL	-	-	-	-
47	Asistent medical – Cabinet medical scolar	PL	-	-	-	-
48	Asistent medical – Cabinet medical scolar	PL	-	-	-	-
<b>IX COMPARTIMENT ASISTENTI PERSONALI</b>						
49-398	Asistenti personali	M	--	-	-	-

Numar posturi /Funcția	Ocupate	Vacante	Total
Nr. total de funcții publice de conducere	1	-	1
Nr. total de funcții publice de execuție	10	1	11
Nr. total de funcții contractuale	277	109	386
Nr. total de funcții din instituție	288	110	398



PRESEDINTE DE SEDINTA,  
Alexandru Focșani

Directia de Asistența Socială  
Director executiv  
Ing. Calinescu Teodora

SECRETAR GENERAL,  
jr. Monica Dumitrașcu